

How to Use the YSI Water Testing Equipment

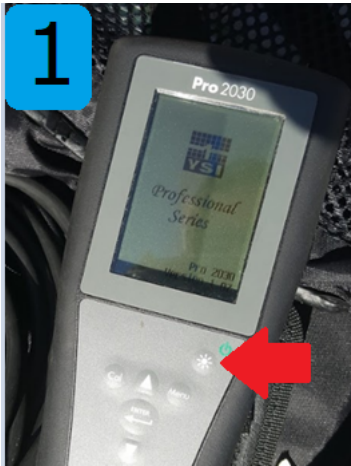


Figure 1. Turn YSI on by pressing and holding the button that looks like a sun



Figure 2. Remove sleeve from sensor guard. Submerge the sensor in the upweller at the end near the outfall pipe (Harold's work shed side). Let it sit for a few minutes.

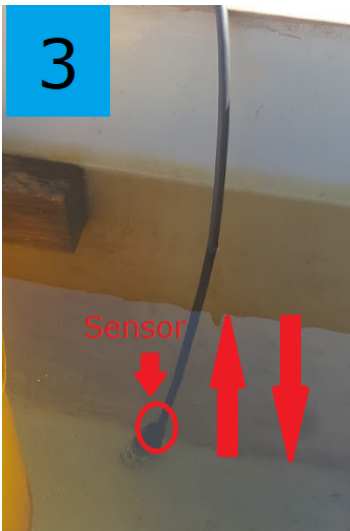


Figure 3. Once the sensor has sat in the water for a few minutes, jig it up and down in the water column. You will see that the top number (DO mg/L) will change. Continue jiggling, keeping the sensor submerged until the number holds steady. That is the value you use for the DO on the data sheet.



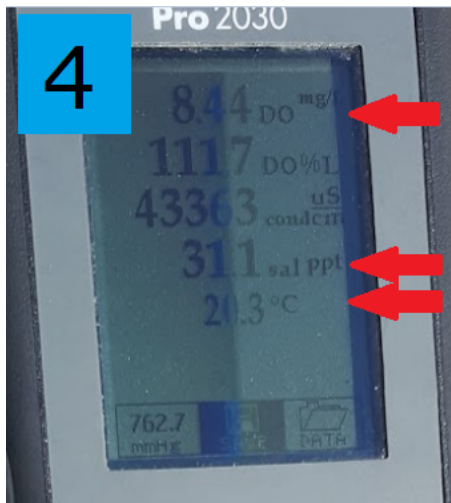


Figure 4. Write down the values you get for DO, Salinity and Temperature down in the Upweller Daily Monitoring Log Notebook.

Water Quality Monitoring

Temperature (°C) _____

Salinity (ppt) _____

DO (mg/l) _____

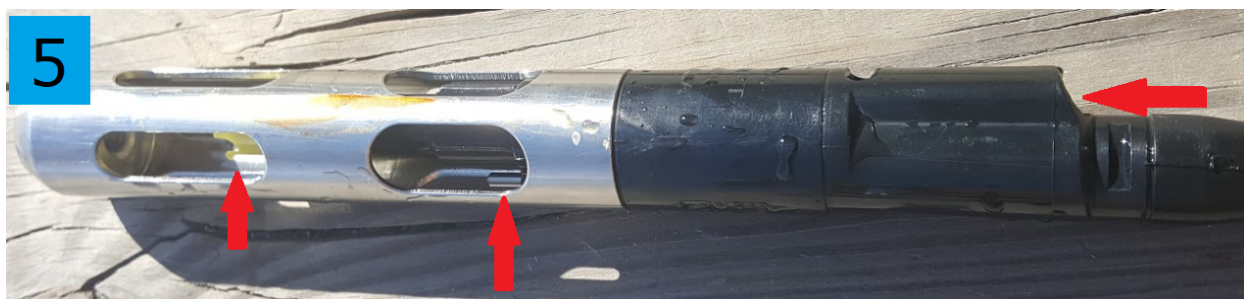


Figure 5. Rinse the sensors with FRESH water, with emphasis on the areas indicated by the red arrows.



Figure 6. Check to make sure the little sponge in the sensor guard is moist. Replace the sponge and put the sensor guard back on the sensors.

7 Make sure the YSI is switched off by pressing and holding the sun button (Fig 1) until the screen turns off.